



INSIGHTqcx™

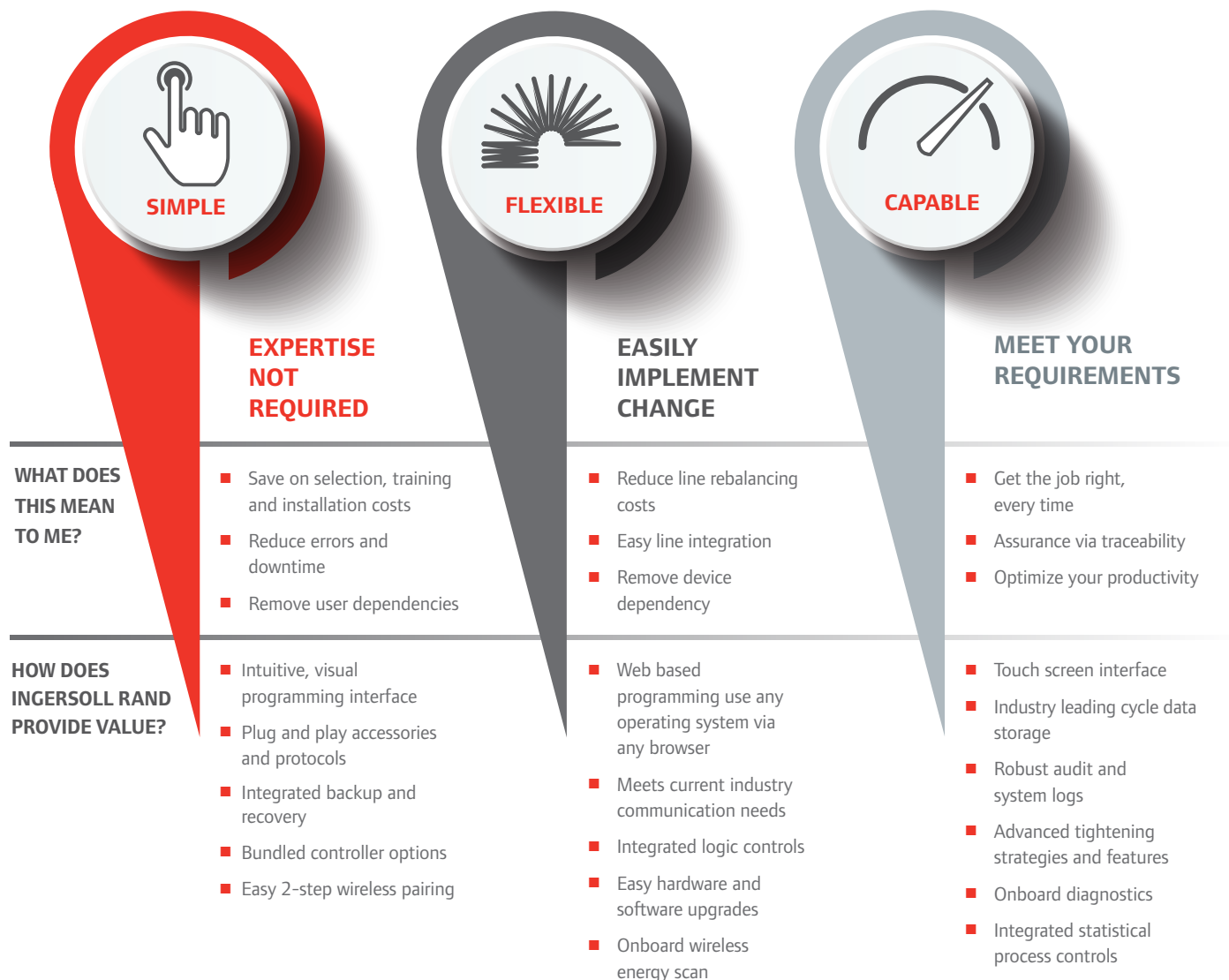
Cordless Controller



INSIGHTqcx™ Controller



When trying to achieve simple manufacturing goals in a complex manufacturing world, understanding the fastening process doesn't have to be complicated. The new Ingersoll Rand® INSIGHTqcx™ is different, by design. This cordless controller is designed to be easy to use and integrate, while providing a common platform to meet your assembly requirements worldwide.



Simply Insightful

The controller's web-based software eliminates device dependencies and enables full programming capability with any device that can run an internet browser, including smart phones, tablets or computers. The INSIGHTqcx™ controller is easy to integrate with the manufacturing line, provides flexible logic controls for job sequencing and helps reduce line rebalancing costs through a simple and intuitive user interface.

INSIGHTqcx™ Controller Features





Ingersoll Rand (NYSE:IR) advances the quality of life by creating comfortable, sustainable and efficient environments. Our people and our family of brands—including Club Car®—work together to enhance the quality and comfort of air in homes and buildings; transport and protect food and perishables; and increase industrial productivity and efficiency. We are a \$14 billion global business committed to a world of sustainable progress and enduring results.



ingersollrandproducts.com